



RONDCOM 65B

ENGLISH

鼎晶科技/WWW.HI-TOP.COM.TW  
email:cnc@hi-top.com.tw  
m:0925-622-111

NEW

Roundness and Cylindrical Profile  
Measuring Instruments

**RONDCOM 65B**



High-end roundness measuring machine

# RONDCOM 65B

## Features

### ■ High accuracy

Highest rotation accuracy in this class : 0.01  $\mu\text{m}$

### ■ High throughput

Centering and tilting within 60 second. It realize high efficiency and save total measuring time.

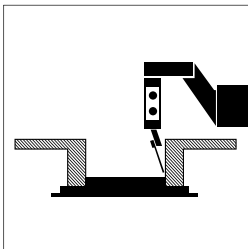
### ■ High reliability

Gabbro with minimal susceptibility to age-related deterioration is used in the column, base and arm which guarantee top-class high accuracy over time.



### Offset type detector holder (Optional) **PATENTED**

Various workpieces can be measured easily without interference from the R-axis arm. You can switch between outside diameter



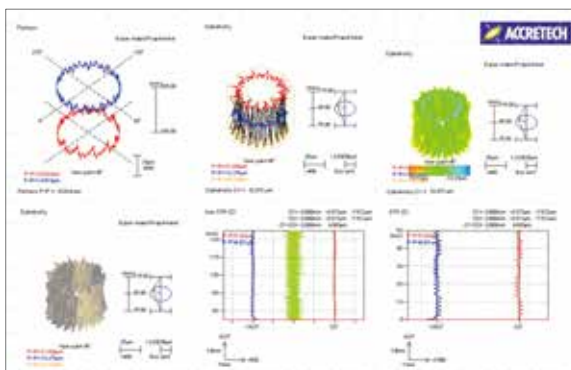
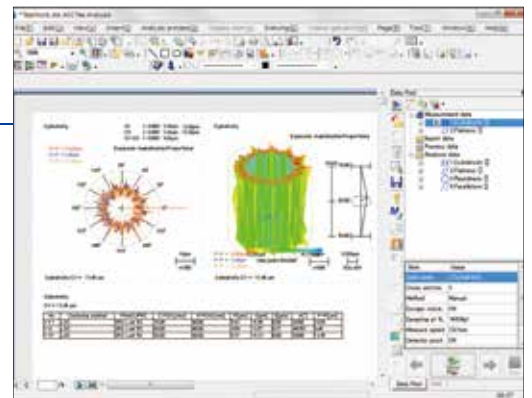
measurement and top flatness measurement just by tilting the detector holder.

## Software



### Integrated Analysis Software ACCTee

New Measurement Style with New Concept



### Easy-to-Use Interface for Leading-Edge Operability

ACCTee is equipped with a Windows style user interface that is easy for anyone to understand and use. User-friendly and intuitive icons guide you through a series of operations from measurement to the printing of analysis results.

## Offset type CNC detector holder (Optional) **PATENTED**

Detector positioning for ID/OD measurements, top/under/ tapered surfaces measurements, and so on can be controlled automatically. The same detector is used with all standard type instruments and is also available after upgrades. Once you have both a standard model and the CNC holder model, maintenance costs are reduced.



## High accuracy

Ultra high precision air bearing in  $\Theta$ axis realize highest rotation accuracy in this class : 0.01  $\mu\text{m}$



CNC detector holder (Optional)



Non contact sensor (Optional)

## Specifications

Model		RONDCOM 65B	
		High column	
Measuring system		CNC and manual	
Measuring range	Max. measuring diameter	$\Phi$ 420 mm	
	Up/down feed range (Z-axis)	500 mm	800 mm
	Radial feed range (R-axis)	220 mm	
	Max. loading diameter	$\Phi$ 680 mm	
	Max. measuring height	500 mm	800 mm
	Max. load capacity	600 N	
Rotation accuracy	Radial direction H: Measuring height (mm)	( 0.01 + 4H/10,000 ) $\mu\text{m}$ (Gaussian 15 UPR)	
	Axis direction R: Measuring radius (mm)	( 0.03 + 4R/10,000 ) $\mu\text{m}$ (Gaussian 15 UPR)	
Straightness accuracy	Up/down direction (Z-axis)	0.05 $\mu\text{m}/100$ mm 0.2 $\mu\text{m}/500$ mm	0.1 $\mu\text{m}/100$ mm 0.5 $\mu\text{m}/800$ mm
	Radial direction (R-axis)	0.5 $\mu\text{m}/200$ mm	
Parallelism accuracy	Up/down direction (Z-axis)	1.5 $\mu\text{m}/500$ mm	
Perpendicularity accuracy	Radial direction (R-axis)	0.5 $\mu\text{m}/200$ $\mu\text{m}$	
Move speed	Rotation speed (T-axis)	Max: 20/min 2 to 10/min (Rotational measurement)	
	Up/down direction speed (Z-axis)	Max: 30 mm/s 0.6 to 6 mm/s (Rectilinear measurement)	
	Radial direction speed (R-axis)	Max: 20 mm/s 0.6 to 6 mm/s (Rectilinear measurement)	
Rotary table	Table outside diameter	$\Phi$ 290 mm	
	Adjustment range of centering/tilting	$\pm 5$ mm/ $\pm 1^\circ$	
Measuring range	$\pm 3200$ $\mu\text{m}$ to $\pm 12.8$ $\mu\text{m}$ ( x50 to x100 k)		
Special function	Offset type detector holder (Optional) Offset type CNC detector holder (Optional)		
Other	Power supply (Voltage to be specified)	AC 100 V to 240 V, 50/60 Hz (Grounding required)	
	Air consumption volume	49 NL/min	
	Installation dimensions (W x D x H) mm	1660 (W) x 950 (D) x 1800 (H)	1660 (W) x 950 (D) x 2100 (H)
	Weight (except options)	790 kg	910 kg

## Head Office

2968-2, Ishikawa-machi, Hachioji-city,  
Tokyo 192-0032, Japan  
TEL: +81(0)42-642-1701 FAX: +81(0)42-642-1821

## International Sales and Marketing

4, Higashi-Nakanuki-machi, Tsuchiura-city,  
Ibaraki 300-0006, Japan  
TEL: +81(0)29-831-1240 FAX: +81(0)29-831-1461

## Germany / Accretech (Europe) GmbH

Head Office  
Landsberger Str. 396, D-81241 Munich, Germany  
TEL: +49(0)89-546788-0 FAX: +49 (0)89-546788-10

## Sao Paulo / ACCRETECH (Europe) GmbH

Sales Representative in Sao Paulo, Brazil  
Rua Irineu Marinho 179, 04739-040,  
Sao Paulo - SP, Brazil  
TEL: +55(0)11-2539-4051

## Korea / Accretech Korea Co., Ltd.

Head Office / Seongnam  
(3F, Fine Venture Bldg., Yatap-dong)  
41, Seongnam-daero 925 beon-gil, Bundang-gu,  
Seongnam-si, Gyeonggi-do, 463-828, Korea  
TEL: +82(0)31-786-4000 FAX: +82(0)31-786-4090

## Ulsan Office

(2015 2F Jinjang Deplex, Jinjang-dong)  
16, Jinjangnyutong-ro, Buk-gu, Ulsan, 683-350, Korea  
TEL: +82(0)52-268-2136 FAX: +82(0)52-268-2137

## China / Accretech (China) Co., Ltd.

Head Office / Shanghai  
Room 2101C, No 1077, Zuchongzhi Road,  
Pudong New Area, Shanghai, China, 201203  
TEL: +86(0)21-3887-0801 FAX: +86(0)21-3887-0805

## Thailand / Tokyo Seimitsu (Thailand) Co., Ltd.

HQ & Metrology  
2/3 Moo 14, Bangna Towers B 1st floor, Bangna-Trad Rd.,  
K.M. 6.5, Bangkaew, Bangplee, Samutprakarn 10540 Thailand  
TEL: +66-2-751-9573, 9574 FAX: +66-2-751-9575

## Vietnam / ACCRETECH Vietnam Co., Ltd.

Hanoi REPRESENTATIVE OFFICE  
356 room, 6th Floor, Office Building, 85 Nguyen Du St,  
Hai Ba Truong Dist, Hanoi, Vietnam  
TEL: +84-4-3941-3309 FAX: +84-4-3941-3310

## Ho Chi Minh OFFICE

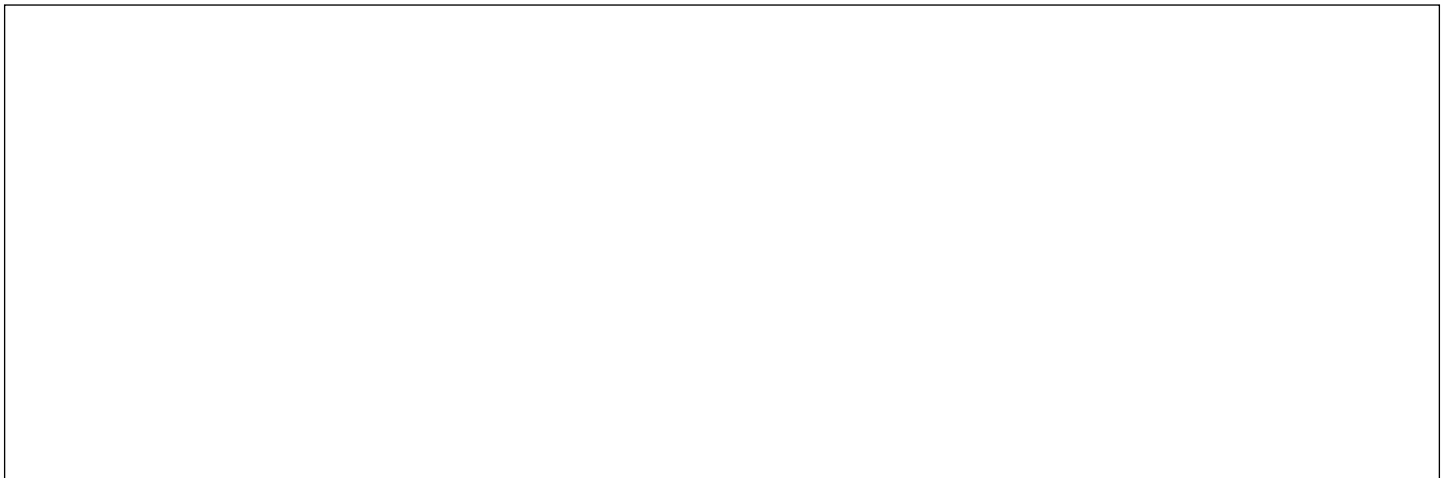
Room 1101-1102, 11th Floor, Broadcast Office building,  
343 Dien Bien Phu Street, Ward,15, Binh Thanh District,  
Ho Chi Minh City, Vietnam  
TEL: +84-8-3512-6760 FAX: +84-4-3941-3310

## Indonesia / PT Accretech Indonesia

Komplek Rukan Cikarang Square Block D No.68  
JL. Raya Cikarang-Cibarusah KM 40 No.1 Cikarang  
Bekasi 17530, Indonesia  
TEL: +62(0)21-2961-2375 FAX: +62(0)21-2961-2376

## Taiwan / ACCRETECH (Taiwan) Co., Ltd.

Metrology Division  
2F., No.199, Zhonghe St., Zhubei City,  
Hsinchu County 30267, Taiwan (R.O.C)  
TEL: +886(0)3-5531300 FAX: +886(0)3-5531319



ISO 9001 and ISO 14001 awarded to the Hachioji and Tsuchiura Plants

We reserve the right to change the contents of this catalog, including product specifications, without notice when products are updated.

Some of our products shall be controlled by the Foreign Exchange and Foreign Trade Act, and required an export license by the Japanese Government. Regarding exporting the products and/or providing a non-resident with technologies, please consult Tokyo Seimitsu.

<http://www.accretech.jp/>