

# ACCTee



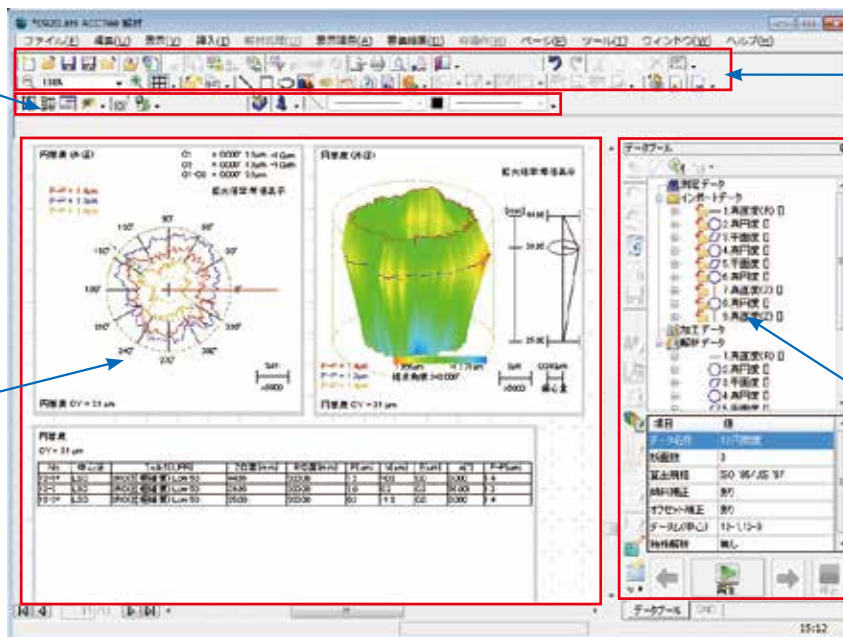
**New Measurement Style with New Concept  
All Measurements and Analyses Available  
in a Document**

## ACCTee Integrated Analysis Software

Our newly developed ACCTee software represents the next generation of integrated TMS software. Based on a new concept in measurement that combines document-based measurement and analysis with leading-edge operability and an intuitive work environment, ACCTee makes all operations available in the document (measurement result sheet), and enables all data and information to be saved with related data. Setting wizards simplify instrument setup and configuration, making it possible for anyone to easily perform a variety of measurement and analysis tasks, optimizing throughput and performance. This is the "All in the Document", next generation integrated software, ACCTee. Measurement result data of 3D coordinate measuring instrument can be input and analyzed.

### Easy-to-Use Interface for Leading-Edge Operability

ACCTee is equipped with a Windows style user interface that is easy for anyone to understand and use. User-friendly and intuitive icons guide you through a series of operations from measurement to the printing of analysis results.



**Smart tool bar**

The Print layout of the Data sheet for the analysis of measurement data and measurement result is displayed here.

**Menu icon**

One click of the icon adds a display item and saves or opens documents.

**Analysis area**

The Print layout of the Data sheet for the analysis of measurement data and measurement result is displayed here.

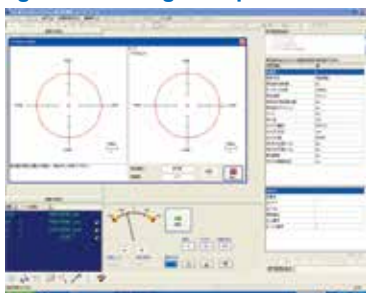
**Data pool**

In this area, a list of actually executed operations such as measurement, analysis and so on is displayed.

### Easy Mode

**Ideal for manual measuring systems and inexperienced users, the Easy mode features a comprehensive set of wizards to guide you through a wide range of operations.**

Simply select the item you want to measure and set the measurement conditions by following the steps in the appropriate wizard. If you do not need to change any settings, just select the measurement item and click the measurement button to execute measurement.

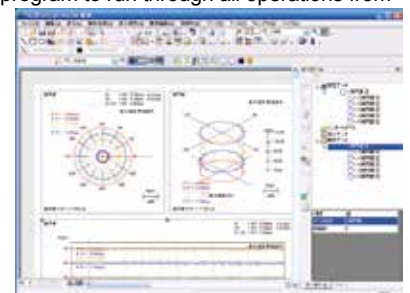


### Expert Mode

**In the Expert mode you can create a CNC program without having to actually operate the measuring instrument.**

Then simply run the CNC program to run through all operations from workpiece measurement to results output.

This mode is ideal for users of automated instruments and for expert users.



## Detector Calibration Wizard

With ACCTee's detector calibration wizard, you can calibrate sensitivity by selecting any of the following three options: Magnification calibration, Block gage, Level difference master. Next, specify the calibration condition by entering a reference value). Once the installation method for the calibration unit and the measurement start position have been confirmed, calibration is executed. The wizard takes you step by step through the procedure, making sure you get it right.



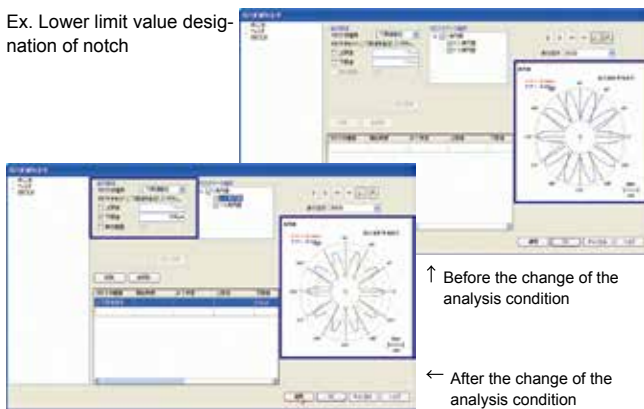
## Effective Utilization as Offline Analysis Software

ACCTee is so designed that it can be used not only as incidental software for operation of roundness measuring instrument but also as user-friendly offline analysis software. For example, text data obtained by measurement with 3D coordinate measuring instrument can be input to ACCTee for analysis and printing.

## Change of Analysis Condition with Preview Function

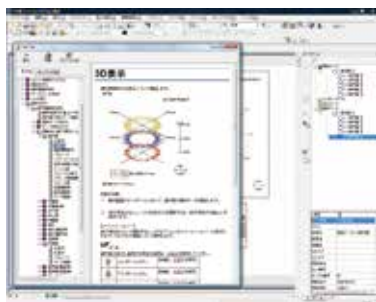
ACCTee's analysis condition setting lets make changes to the Centering method, filter, notch setting and other parameters. You can see the analysis results in a preview display, and use trial and error analysis to select the optimum analysis condition.

Ex. Lower limit value designation of notch



## Help System

Help is always available whenever ACCTee is on. ACCTee features an on-line manual system so that an appropriate help message can be displayed by clicking the soft help key. Help can also be obtained by browsing the index or searching with keywords.

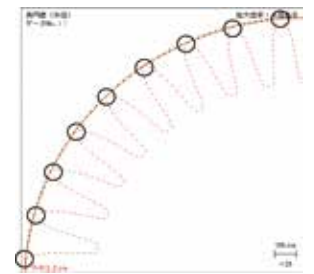


## Straightness Measurement Function with Edge Detection

This function automatically identifies the edge-to-edge distance of a workpiece and sets a measuring length. It is ideal for rectilinear measurements of workpieces such as crankshafts.

## Gear Tip Analysis

Facilitating automatic gear tip surface recognition and enabling roundness evaluation just using the gear tip surface, this function eliminates the need to set a number of notch segments.



## Self-Diagnosis Function

Always running in the background, the built-in self-diagnosis function provides valuable support whenever you run into trouble. Error messages let you know where the problem is, what it is, and what the possible solution, allowing you to immediately take the appropriate action in order to resolve the problem as soon as possible.



## Available in Multiple Languages (Standard Function)

ACCTee is available in multiple languages, including Japanese, English, German, French, Italian, Spanish, Chinese and Korean, so that it can be used in any country around the world. (Contact us beforehand, if you are using it overseas.)

